



weinor

PREMIUM QUALITY
MADE IN GERMANY

143

AUSTRALIA'S LARGEST RANGE
OF FABRICS AND COLOURS



KUBATA | KUBATA LED

THE CUBIC CASSETTE AWNING

SOLIS

www.solisproducts.com

CONTENTS

TECHNICAL INFORMATION

3-5	Overview and highlights
6	Product benefits and versions
7	Kubata Technology
8	Kubata LED
9-13	Kubata Controls
14-19	Kubata Planning
20	Kubata Support Profile
21-27	Kubata Installation
28	Kubata Prices

GENERAL INFORMATION

30	Frame Colours
32	Fabrics



KUBATA



KABUTA

THE CUBIC CASSETTE AWNING

Cubic shapes are a popular style element for contemporary façades. The Kubata cassette awning blends ideally into these. With its clear design it complements modern architecture perfectly. But the high-quality technology is also impressive: LED spotlights integrated into the cassette, the Weinor LongLife arm, convenient control and large choice of fabrics and colours – leaving nothing to be desired.



CUBIC CLEAN LINES:

modern, clear design with no visible fixings



REMOVABLE COVER CAPS:

easy access for cabling the controls



WEINOR OPTI-FLOW-SYSTEM® AND SUPPORT PROFILE:

optimum fabric positioning

SIMPLE INSTALLATION:

with wall bracket and carrier bar

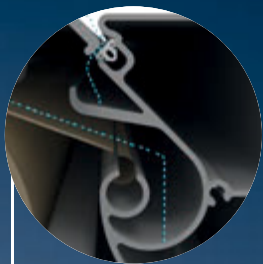


LED LIGHTING:

integrated into the cassette



KUBATA HIGHLIGHTS



RELIABLE DRAINAGE:
no ingress of rainwater



WEINOR LONGLIFE ARM:
durable and quiet



EASY ASSEMBLY FRONT PROFILE END CAP:
no visible fixings and integrated water drainage outlet

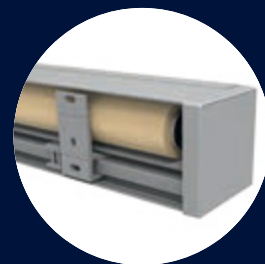


WIND LOCK SAFETY DEVICE:
well sheltered even in winds

2 VERSIONS



cassette with back plate



cassette without back plate

KUBATA BENIFITS



CUBIC, CLEAN LINES – MODERN CONTEMPORARY DESIGN

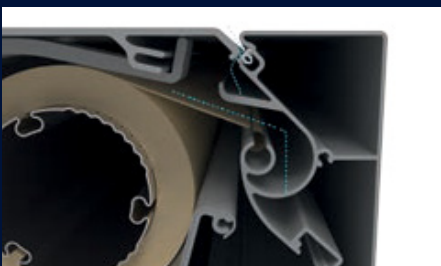
The Kubata's Opti-Flow-System® from weinor is fitted with a support profile across the whole width of the awning that ensures optimum fabric positioning.



KUBATA LED – CASSETTE WITH INTEGRATED LED LIGHTING

The LED spotlights integrated into the cassette produce atmospheric lighting on the patio:

- 30,000 LED light hours with lowest energy consumption (85% electricity saving compared to halogen technology)
- LED infinitely dimmable using weinor's BiConnect control



RELIABLE DRAINAGE – RAINWATER IS DRAINED OFF IN A CONTROLLED WAY

The front profile is equipped with a new drainage system. The fabric is reliably protected from getting wet as a result.



REMOVABLE COVER CAPS – EASIER ACCESS FOR THE RECEIVER/ CABLE CONNECTIONS

The cover caps on both sides can be removed using the clip technology. As a result, it is very easy to disconnect the drive and controls and it is easier to carry out maintenance work.



WIND LOCK SAFETY DEVICE – WELL-SHELTERED EVEN IN WINDS

Proven technology prevents the awning from lifting up when wind gusts from below:

- Tilting folding arm with wind lock safety device
- Proven, maintenance-free technology
- Forged and extruded aluminium component

KUBATA TECHNOLOGY

● Standard ○ Option — Not Available

KUBATA VERSIONS	KUBATA	KUBATA LED
TECHNOLOGY		
Max width	650cm	650cm
Max projection	450cm	450cm
Cassette size (W x H) incl. standard bracket	210 mm x 205 mm	210 mm x 205 mm
Gear drive	○	—
Motor drive	○ as standard	○ as standard
Angle of pitch on awning	5° to 40°	5° to 40°
Installation alternatives	can be installed on walls, ceilings and rafters	650cm
Angle of pitch on awning	—	● integrated in bottom profile
OptiNut roller tube	○ as standard	○ as standard
OptiNut roller tube	● as standard	● as standard
ACCESSORIES		
Tempura Quadra heating system	○	○
BiSens Agido-3V product protection sensor	○	○
CONTROLS		
Radio control	○	○
No remote	● as standard	● as standard
WEATHER SENSORS		
Sun/wind sensor BiConnect BiSens SW-230 V	○	○
Sun/wind sensor solar powered BiConnect BiSens SW-Solar	○	○
Sun/wind/rain sensor BiConnect BiSens SWR-230V	○	○
QUALITY		
Tested up to	Wind resistance class 2 according to DIN 13561 (wind strength 5 on the Beaufort scale)	

WEIGHT TABLE

WIDTH IN CM	PROJECTION IN CM					
	150	200	250	300	350	400
WEIGHT IN KG						
200	46					
250	54	56				
300	61	63	66			
350	68	70	74	79		
400	76	78	81	86	90	
450	83	85	88	94	98	106
500	90	92	96	101	105	114
550	99	101	105	110	113	122
600	106	109	113	118	124	130
650	114	116	120	125	131	137

Weinor professional tips: Scan the QR code



or view or download them online at:
www.weinorpartner.com/weinor-profi-tips/kubata

KUBATA LED



LED LIGHTING 30,000 HOURS OF LIGHTING WITH LOWEST ENERGY CONSUMPTION

Select LED components for top weinor quality:

- Atmospheric light thanks to special glass lenses
- Visually integrated into the cassette*
- Lighting remains on even when awning is retracted
- Highly energy-efficient
- Operating life of 30,000 hours
- Infinitely dimmable when used with BiConnect radio control
- Easy to service: replace individual LED lights just by dismantling the bottom profile

* Cassette bottom section with integrated LED lights is not assembled.



INTEGRATED LED LIGHTING

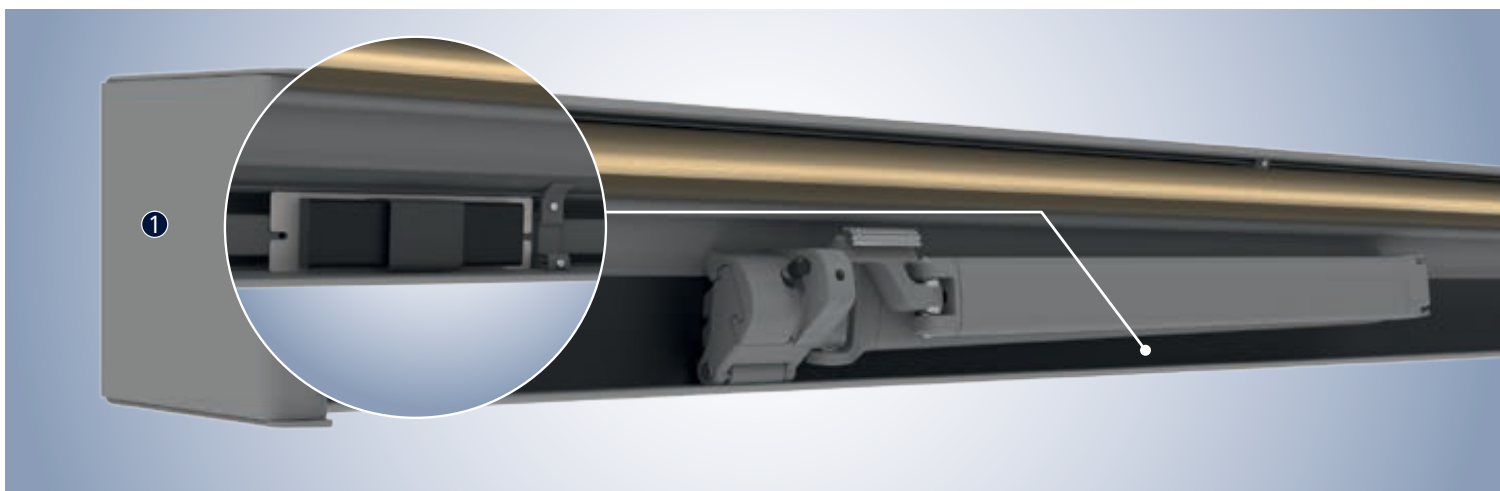
WIDTH IN CM	PROJECTION IN CM						
	100	150	200	250	300	350	400
WEIGHT IN KG							
200	3	3					
250	3 - 4	3 - 4	4				
300	4	4	4	4 - 5			
350	6 - 7	6 - 7	6 - 7	6 - 7	5 - 7		
400	7 - 8	7 - 8	7 - 8	7 - 8	6 - 8	6 - 8	
450	8 - 9	8 - 9	8 - 9	8 - 9	8 - 9	7 - 9	7 - 9
500	9	9	9	9	9	9	9
550	9 - 10	9 - 10	9 - 10	9 - 10	9 - 10	9 - 10	9 - 10
600	10 - 11	10 - 11	10 - 11	10 - 11	10 - 11	10 - 11	10 - 11
650	11 - 12	11 - 12	11 - 12	11 - 12	11 - 12	11 - 12	11 - 12

The LED spotlights are distributed automatically depending on the width/projection/type of bracket. This table shows the LED distribution with standard arm or bracket positions combined with the 85 mm wall bracket.



KUBATA CONTROLS

Easily accessible location for receivers/controls



RECEIVER, POWER SUPPLY PACK AND FURTHER ELECTRICAL COMPONENTS

(e.g. BiConnect receiver in the cassette) The cover cap 1 can be opened for servicing purposes. The drive can be disconnected from the receiver and controlled independently from this.

WEINOR BICONNECT RADIO TECHNOLOGY

PRODUCT	ELECTRONICS	BICONNECT CONTROL	REMOTE RECEIVER	TRANSMITTER
Kubata	Kubata drive	<ul style="list-style-type: none"> • BiRec receiver 	BiRec MA-K	<ul style="list-style-type: none"> • BiEasy 1M/5M/15M Go! hand transmitter • App • 1MW-3V wall transmitter
Kubata LED	Kubata drive and LED lighting	<ul style="list-style-type: none"> • BiRec combi-receiver for main drive and LED (with integrated power supply pack) • Dimmable LED 	BiRec MLED	<ul style="list-style-type: none"> • BiEasy 5M/15M Go! hand transmitter • App
Accessories (optional)	Tempura Quadra heating	<ul style="list-style-type: none"> • Dimmable, additional receiver required • Accommodation of receiver in the design bar provided for this purpose or the Tempura Quadra box 	BiRec HD	<ul style="list-style-type: none"> • BiEasy 5M/15M Go! hand transmitter • App

Requires: awnings with BiConnect remote control and sensors require a BiEasy 1M, 5M or 15M Go!

KUBATA CONTROLS

SOMFY RTS RADIO TECHNOLOGY

PRODUCT	ELECTRONICS	SOMFY RTS CONTROL	REMOTE RECEIVER	TRANSMITTER
Kubata	Kubata drive	<ul style="list-style-type: none"> • RTS control integrated in remote-controlled motor 	Somfy RTS remote-controlled motor	<ul style="list-style-type: none"> • Telis 1 RTS Pure/Telis 1 Soliris RTS Pure/Telis 4 RTS Pure/Telis 4 Soliris RTS Pure hand transmitter • Smoove 1 wall transmitter
Kubata LED	Kubata drive and LED lighting	<ul style="list-style-type: none"> • RTS control integrated in remote-controlled motor • Additional Somfy receiver for the LED spotlights (with downstream power supply pack) integrated into cassette • LED not dimmable 	Somfy RTS remote-controlled motor and RTS lighting receiver	<ul style="list-style-type: none"> • Telis 4 RTS Pure/Telis 4 Soliris RTS Pure hand transmitter
Accessories (optional)	Tempura Quadra heating	<ul style="list-style-type: none"> • Not dimmable, additional receiver required • Accommodation of receiver in the design bar provided for this purpose or the Tempura Quadra box 	Heating Slim Receiver RTS Plug	<ul style="list-style-type: none"> • Telis 4 RTS Pure/Telis 4 Soliris RTS Pure hand transmitter

SOMFY IO-HOMECONTROL® RADIO TECHNOLOGY

PRODUCT	ELECTRONICS	SOMFY IO-HOMECONTROL CONTROL	REMOTE RECEIVER	TRANSMITTER
Kubata	Kubata drive	<ul style="list-style-type: none"> • io-homecontrol integrated in remote-controlled motor 	Somfy io remote-controlled motor	<ul style="list-style-type: none"> • Situo 1 io Pure/Situo 5 io Pure/Easy Sun io Pure Shine hand transmitter • Smoove 1 io Pure Shine wall transmitter
Kubata LED	Kubata drive and LED lighting	<ul style="list-style-type: none"> • io-homecontrol integrated in remote-controlled motor • Additional Somfy receiver for the LED spotlights (with downstream power supply pack) integrated into cassette • LED not dimmable 	Somfy io remote-controlled motor and io lighting receiver	<ul style="list-style-type: none"> • Situo 5 io Pure/Easy Sun io Pure Shine hand transmitter
Accessories (optional)	Tempura Quadra heating	<ul style="list-style-type: none"> • Not possible with Somfy io-homecontrol 		

NOTE:
PLEASE SEE THE "ACCESSORIES" TECHNICAL BROCHURE FOR FURTHER DETAILS REGARDING THE DRIVE AND CONTROL

Some options are subject to a surcharge. For prices, please refer to the weinor awnings price list.

KUBATA CONTROLS

HARD WIRED WITH SOMFY CONTROL

PRODUCT	ELECTRONICS	SOMFY RTS CONTROL	CONTROLS
Kubata	Kubata drive	<ul style="list-style-type: none"> • Somfy control for awning drive 	e.g. Soliris Smoove Uno
Kubata LED	Kubata drive and LED lighting	<ul style="list-style-type: none"> • Somfy control for awning drive • Switch on site for the LED spotlights • LED power supply pack integrated into the cassette • LED not dimmable 	e.g. Soliris Smoove Uno and suitable light switch (on site)
Accessories (optional)	Tempura Quadra heating	<ul style="list-style-type: none"> • Not dimmable 	Suitable switch (on site)

HARD WIRED (SWITCH/CONTROL ON SITE)

PRODUCT	ELECTRONICS	SOMFY RTS CONTROL	CONTROLS
Kubata	Kubata drive	<ul style="list-style-type: none"> • Awning switch for the awning drive 	e.g. Double rocker switches (on site)
Kubata LED	Kubata drive and LED lighting	<ul style="list-style-type: none"> • Awning switch for the awning drive • Switch on site for the LED spotlights • LED power supply pack integrated into the cassette • LED not dimmable 	e.g. Double rocker switch and suitable light switch (on site)
Accessories (optional)	Tempura Quadra heating	<ul style="list-style-type: none"> • Not dimmable 	Suitable switch (on site)

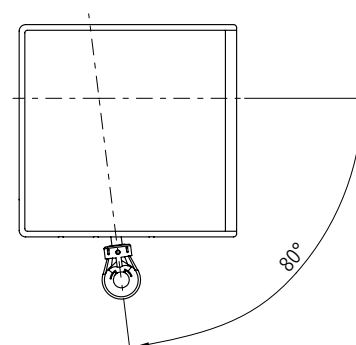
GEAR DRIVE (OPTIONAL)



The Kubata can of course be extended and retracted using a gear handle too (with a max. projection of 350 cm). This option is recommended whenever it is hard to connect to an electrical power source on the site or if the awning is not frequently used.

- The Kubata has a universal bevel gear system
- Tested according to DIN EN 14203
- Freewheel device when extended

Standard Gear Outlet



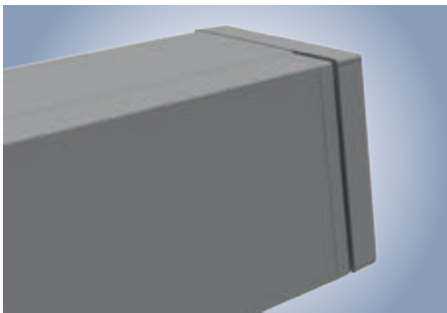
KUBATA CONTROLS

REGULATING THE FRONT PROFILE

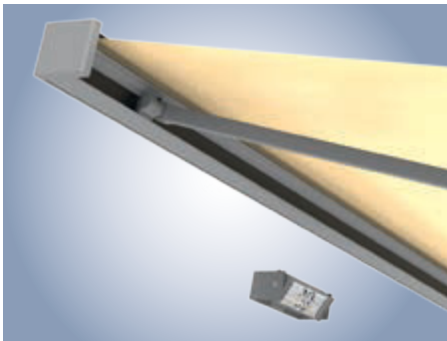


Two stop eccentric tappets are installed on each side of the Kubata. They are used to regulate or adjust the closing position.

This gives the awning cassette a visually harmonious overall look.



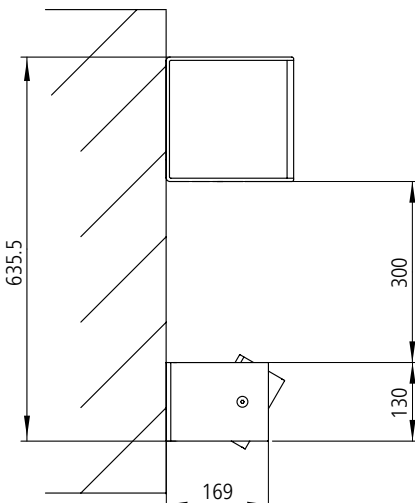
TEMPURA QUADRA HEATING SYSTEM (OPTION)



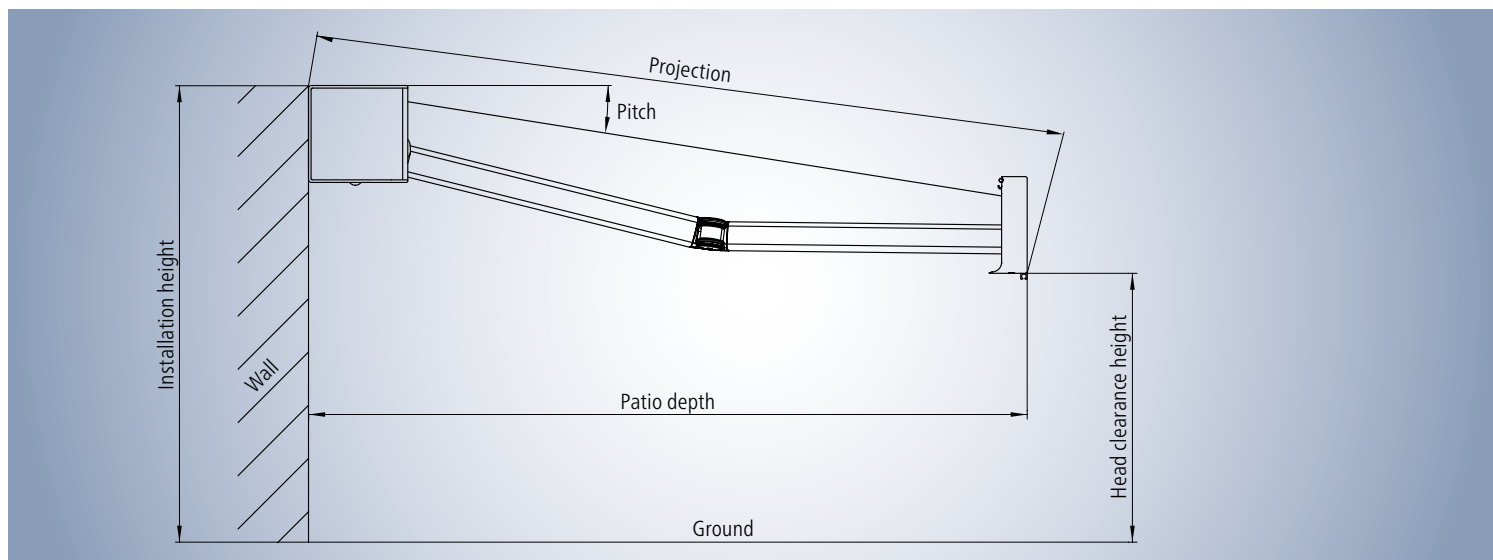
THE PERFECT COMBINATION: KUBATA WITH TEMPURA QUADRA HEATING SYSTEM AND BICONNECT*:

PLEASE NOTE:

The Tempura Quadra angle of pitch is restricted to 15° as standard (this restriction is to avoid the wall being heated up too much by the Tempura). The grub screw, which restricts the angle of pitch, can be removed if the Kubata is pitched up to 10° at the most. Then it is possible to adjust the Tempura Quadra's angle of pitch up to 30°.



KUBATA PLANNING



SITE MEASUREMENTS – DETERMINING THE PROJECTION AND HEAD CLEARANCE HEIGHT

- Find the projection by looking in the “Projection” table for the terrace depth.
- Using the projection from the table and the required angle of inclination, consult the “head clearance height” table for the head clearance height. This head clearance height refers to an installation height of 300 cm.
- Add/subtract the difference between 300 cm and the actual installation height to/from the head clearance height in the table.

DETERMINING THE PROJECTION

PITCH ANGLE	PATIO DEPTH IN CM					
	150	200	250	300	350	400
5°	161	211	261	311	361	400
15°	165	217	269	321	372	400
25°	176	231	286	341	396	400

Projection in cm (rounded figures)

This table can be used to find the awning projection for any given horizontal patio depth.

Please note that the awning projection is possible in 10 cm increments so this has to be rounded up or down.

DETERMINING THE CLEARANCE HEIGHT

PITCH ANGLE	PATIO DEPTH IN CM					
	150	200	250	300	350	400
5°	272	268	263	259	254	250
15°	246	233	220	207	194	181
25°	22	200	179	158	137	116

Projection in cm (rounded figures)

This table is used to find the head clearance heights for various projections when the angle of pitch is 5°, 15° or 25°.

This table is based on the example of an installation height of 300 cm (edge of awning).



KUBATA PLANNING

WALL BRACKET

DETERMINING THE CLEARANCE HEIGHT

PTICH ANGLE	PATIO DEPTH IN CM					
	100-150	160-200	210-250	260-300	310-350	360-400
151 - 200	2					
201 - 250	2	2				
251 - 300	2	2	2			
301 - 350	2	2	2	2		
351 - 400	2	2	2	2	2	
401 - 450	2	2	2	2	2	■ 4/2
451 - 500	3	3	3	3	4	4
501 - 550	3	3	3	3	4	4
551 - 600	3	3	3	4	4	4
601 - 650	3	3	3	4	4	2

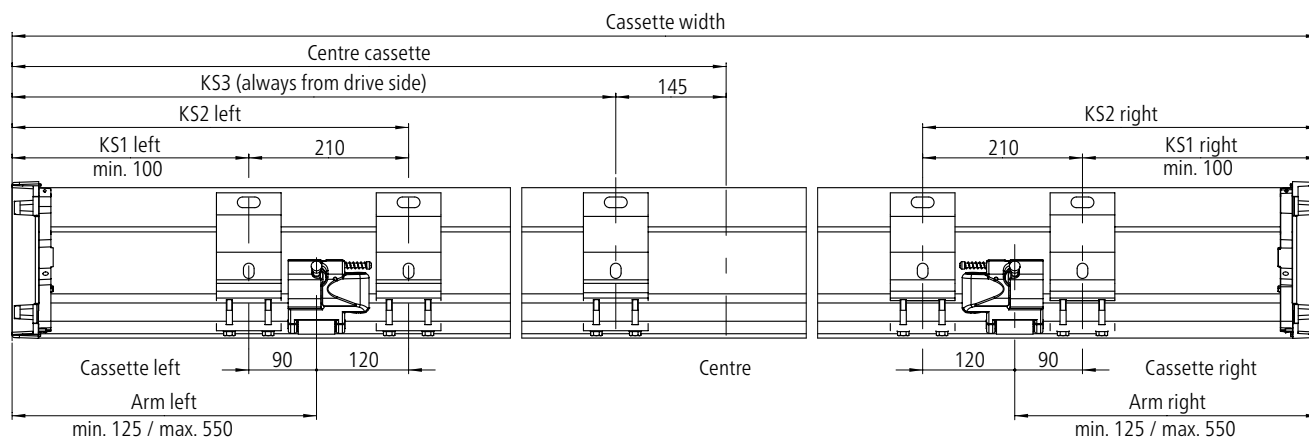
WALL MOUNTING ON C20/25 CONCRETE

Information applies to wall mounting on a pressure-resistant substrate of C20/25 concrete.

Please see the bracket price list for the respective sizes and bracket version extraction forces.

- 2 85 mm wall bracket
- 3 85 mm wall bracket
- 4 85 mm wall bracket
- 4/2 85 mm wall bracket, in the limit range of the 260 mm wall bracket with carrier bar reinforcement
- 85 mm wall bracket

POSITION OF WALL BRACKETS AND KUBATA CASSETTE

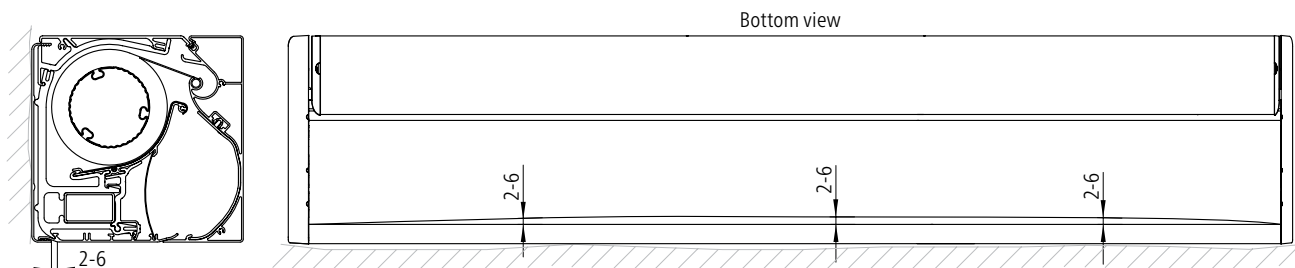


Notes:

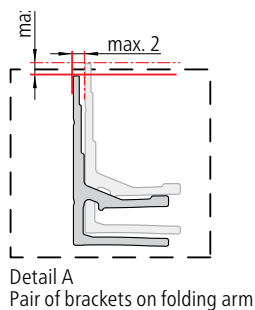
- KS1 = outside bracket
- KS2 = inside bracket
- KS3 = centre bracket

KUBATA PLANNING

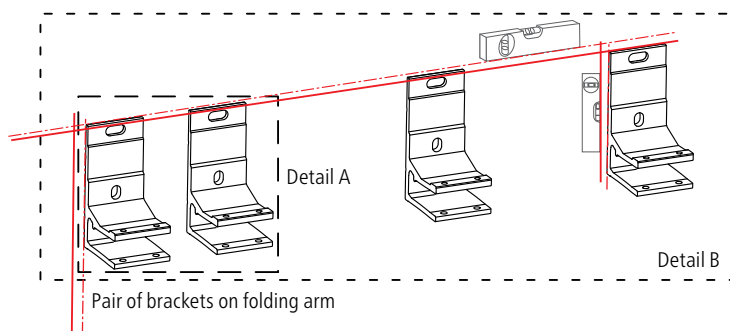
INSTALLATION ALLOWANCES



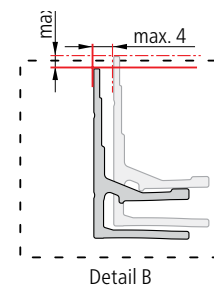
House walls are never totally straight. Which is why there is an automatic compensation function between the bottom profile and back plate with the Kubata. Up to 4 mm can be compensated for as a result. This guarantees that the awning cassette is straight and the front profile closes perfectly as a result. A maximum 4 mm shift can be produced on the movable transition between the bottom profile and back plate using this function. It is necessary to align the cassette ideally.



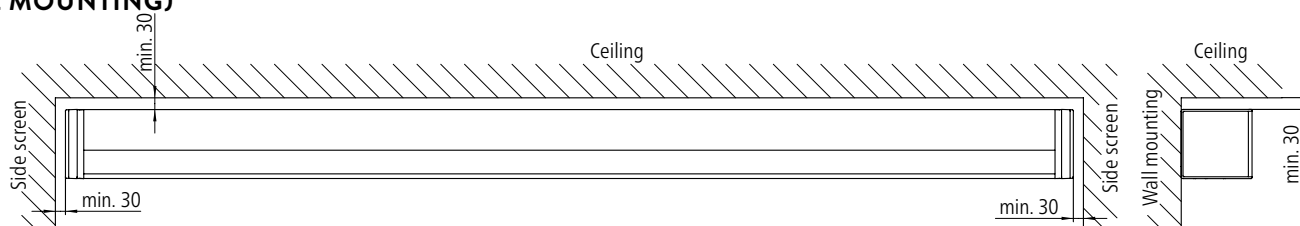
Detail A:
The brackets' tolerance values in the thrust support area (on the folding arm) are max. 2 mm.



Detail B:
The outer brackets' installation tolerance is max. 4 mm.



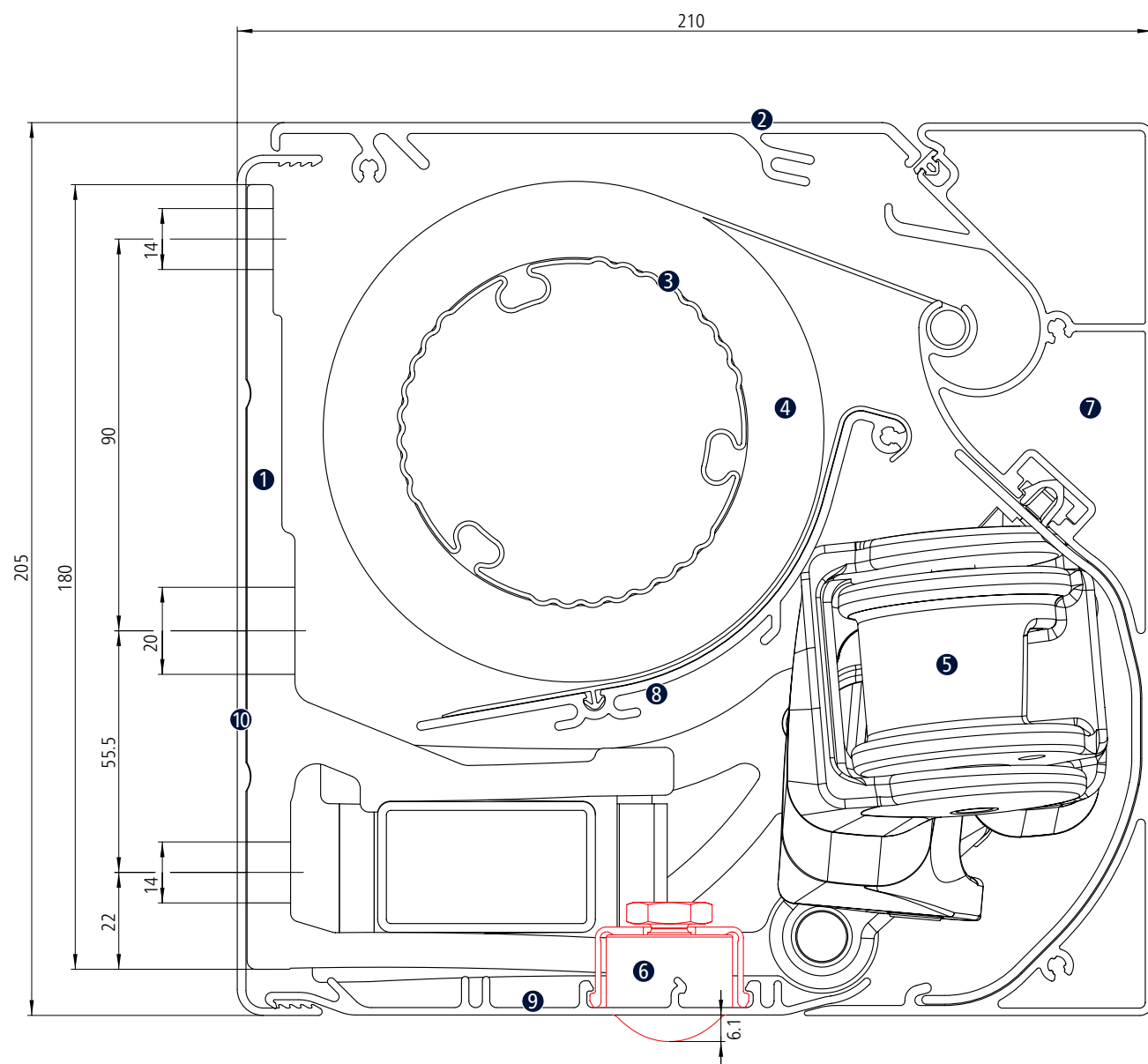
MINIMUM SPACING DISTANCES FOR INSTALLATION IN THE NICHE (WALL MOUNTING)



KUBATA PLANNING

CROSS-SECTION

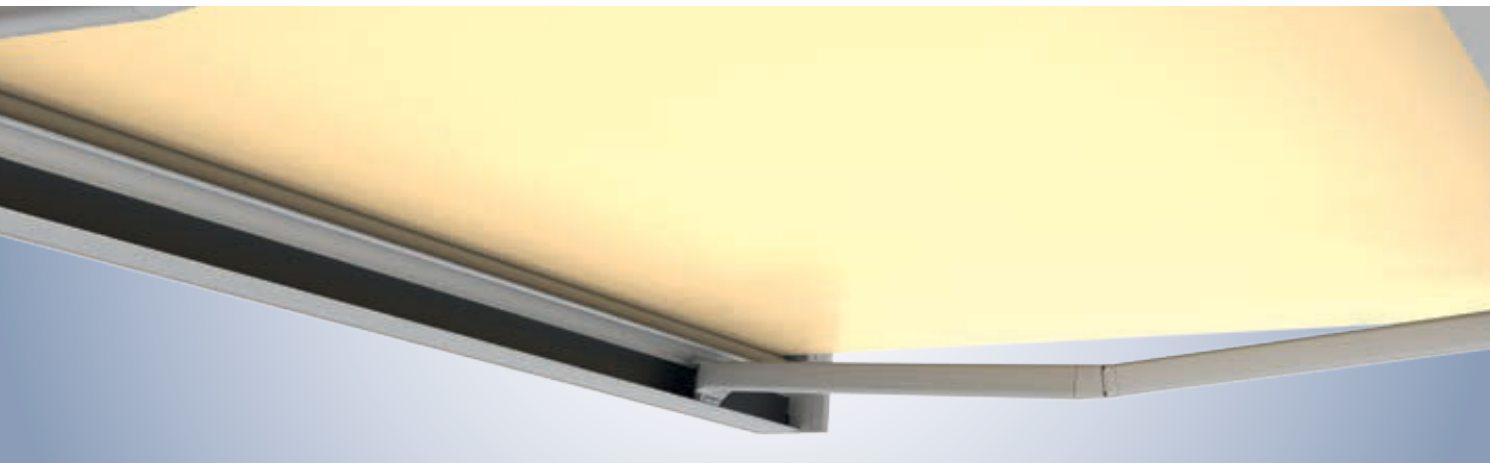
KUBATA LED



- ❶ Wall bracket
- ❷ Roof profile
- ❸ Fabric roller bearing
- ❹ Fabric rolls
- ❺ Spring-tensioned arm

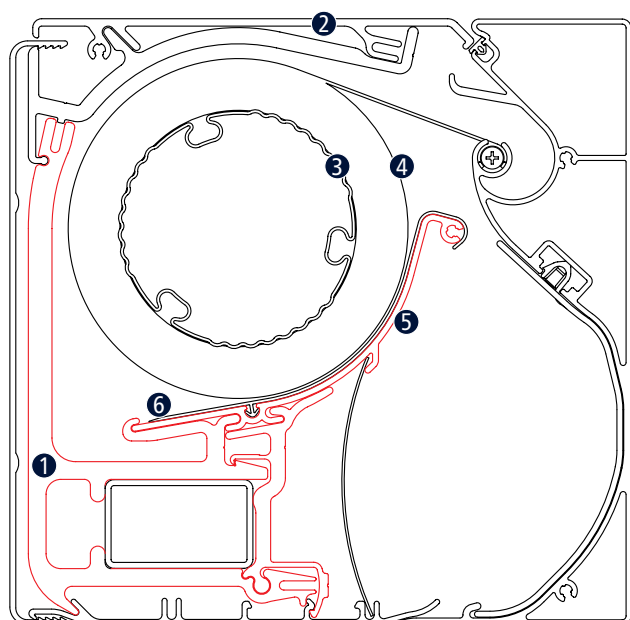
- ❻ LED spotlight
- ❼ Drop profile
- ❽ Support profile
- ❾ Bottom profile
- ❿ Back profile

KUBATA SUPPORT PROFILE



Kubata: support profile across the whole width of the awning

The weinor Opti-Flow-System® and support profile across the whole width of the awning ensure optimum fabric positioning.



- ① Housing bracket
- ② Cassette
- ③ Fabric roller bearing
- ④ Fabric rolls
- ⑤ Support profile
- ⑥ Glide profile

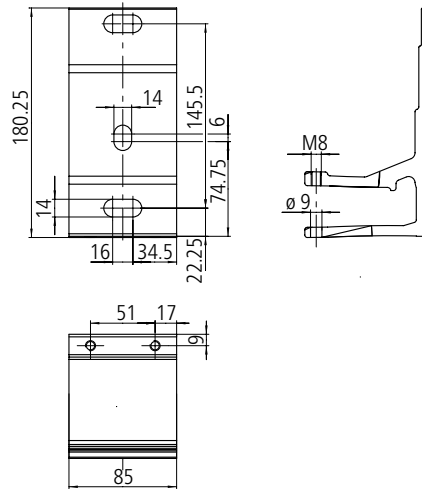
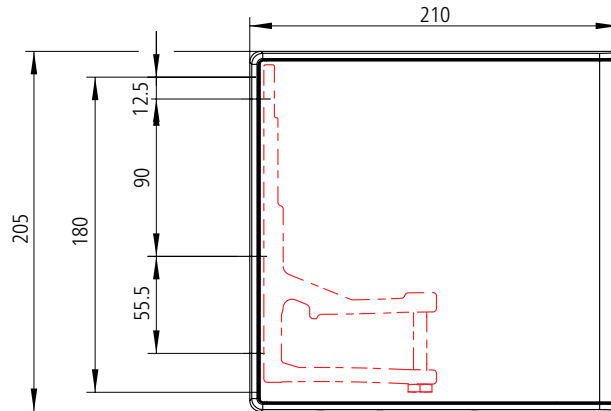


KUBATA INSTALLATION

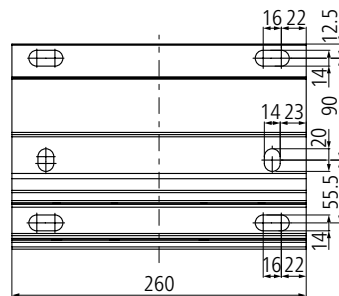
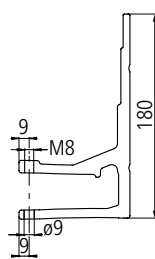
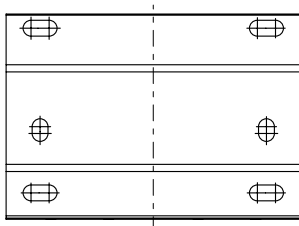
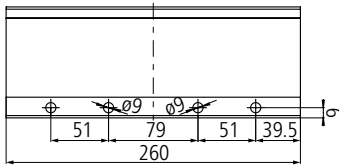
WALL MOUNTING - BRACKETS



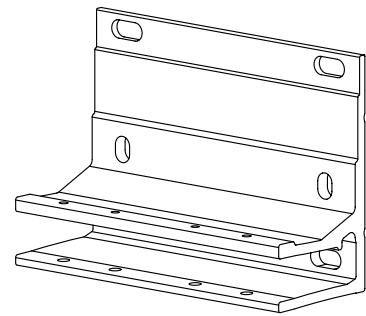
Wall bracket



85 mm wall bracket



260 mm wall bracket

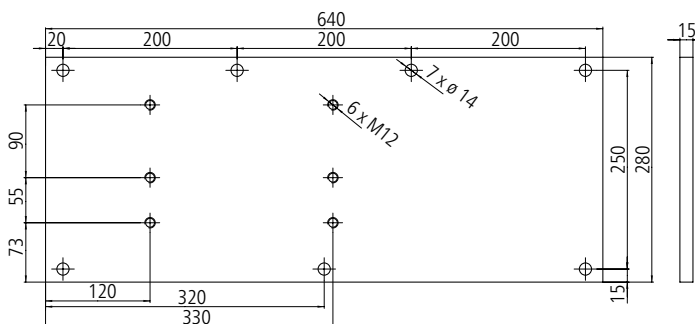


KUBATA INSTALLATION

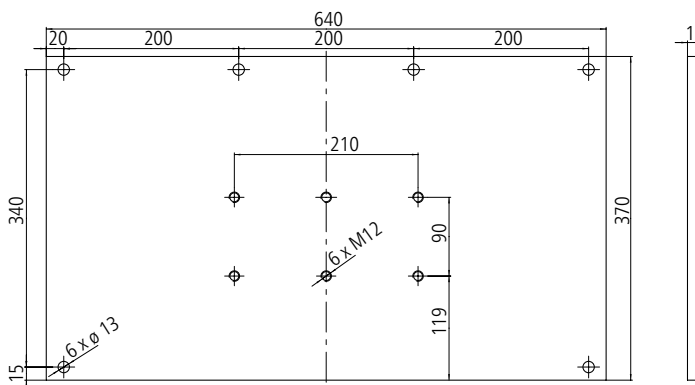
WALL MOUNTING - MOUNTING PLATES



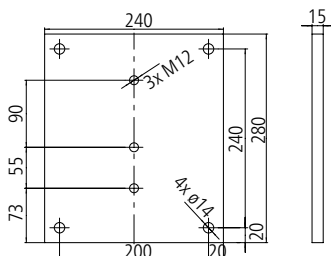
Mounting plate 640 x 280 x 15 mm



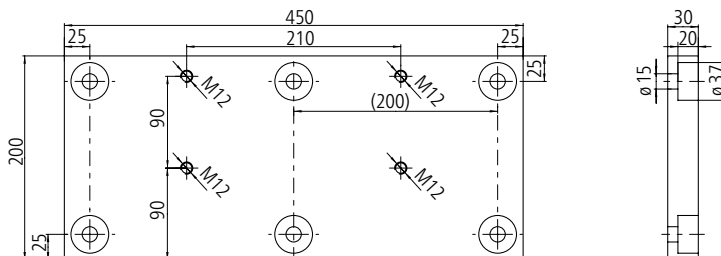
Mounting plate 640 x 370 x 15 mm



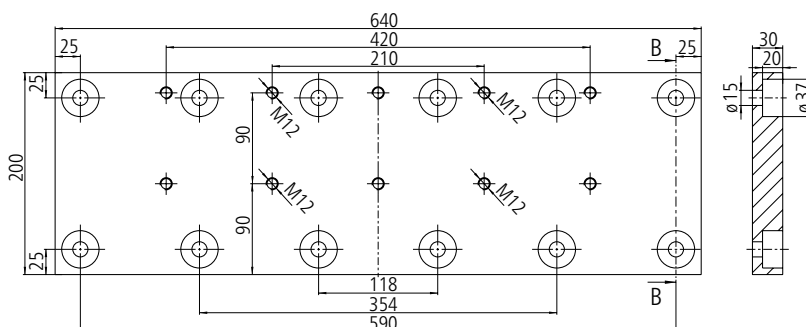
Mounting plate 240 x 280 x 15 mm



Mounting plate 450 x 200 x 30 mm



Mounting plate 640 x 200 x 30 mm

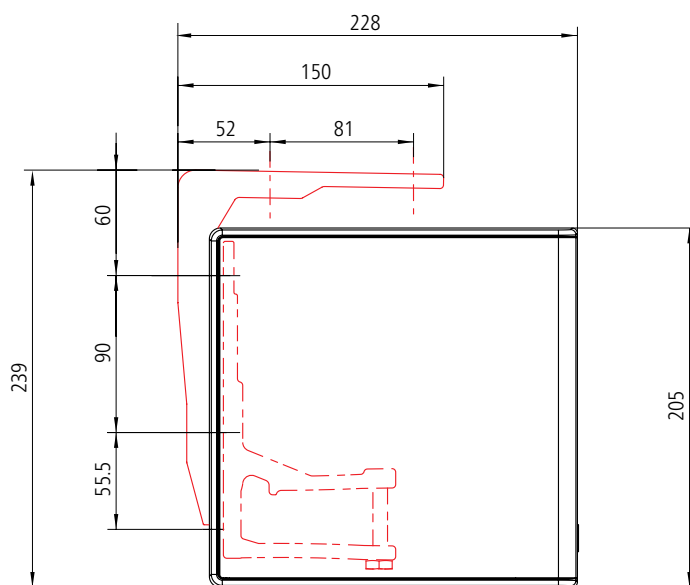


KUBATA INSTALLATION

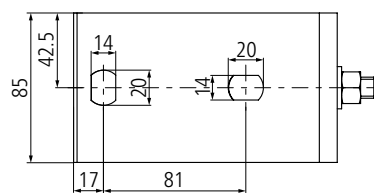
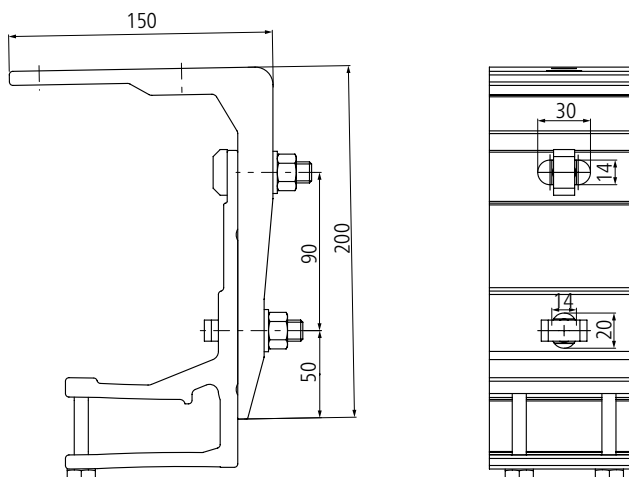
CEILING MOUNTING



Ceiling bracket

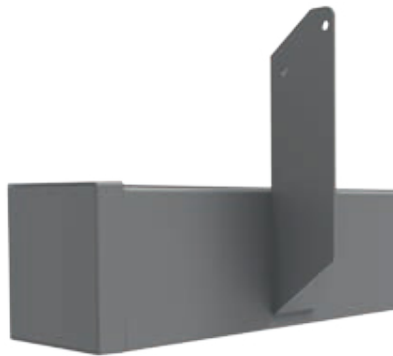


Ceiling bracket



KUBATA INSTALLATION

RAFTER MOUNTING



Rafter bracket



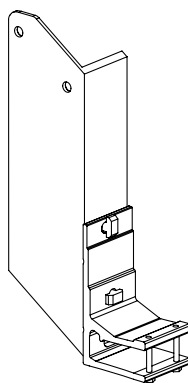
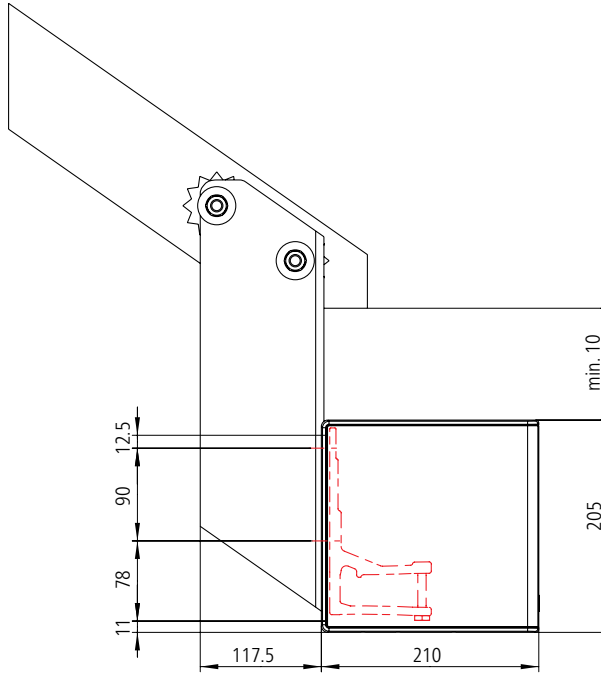
Rafter bracket without mounting plate and wall bracket



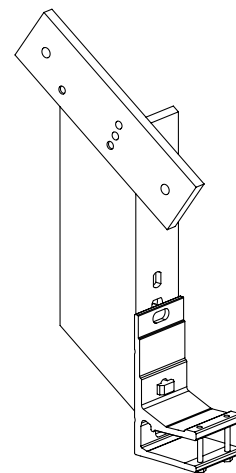
Rafter bracket (right)



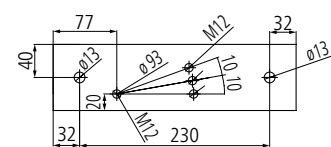
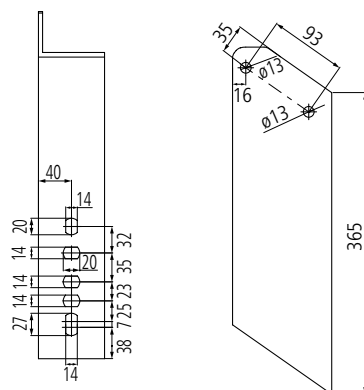
Mounting plate for 294 x 80 x 15 mm rafter bracket



Rafter bracket without mounting plate



Rafter bracket without mounting plate



KUBATA INSTALLATION

EXTRACTION FORCES

The extraction force is the force with which the weight of the awning and the wind load pull on each upper fixing. The tables indicate this force in N per upper fixing. It varies depending on the awning size and the wall bracket /mounting plate used.

Selecting the wall bracket and anchoring system:

1. Consult relevant table for extraction force per fixing for selected awning size.
2. Select a wall bracket/mounting plate for which there is fixing material which can resist the indicated extraction force.

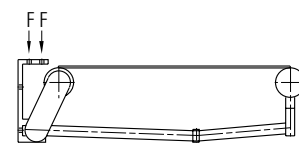
Remember to take into account the spacing, the area which will be damaged if the fixing breaks out, the type of fixing material used and the mounting base.

See separate bracket overview for other bases.

CEILING INSTALLATION (ON C20/25 CONCRETE)

Extraction forces in N for ceiling mounting

WIDTH IN CM	PROJECTION IN CM					
	150	200	250	300	350	400
200	1086					
250	1292	1862				
300	1498	2156	2987			
350	1704	2456	3392	4518		
400	1910	2754	3796	5045	6362	
450	2126	3061	4211	5582	3528	4908
500	2332	3358	4615	6110	3861	5375
550	2538	3656	5020	3328	4196	5842
600	2744	3953	5424	3592	4527	6309
650	2950	4251	5829	3856	4860	6776



F = force

1 ceiling bracket including 1 85 mm wall bracket per arm or 2 ceiling brackets including

2 85 mm wall brackets per arm

1 ceiling bracket including

1 85 mm wall bracket as centre bracket, from 451 cm wide







Number of fixings:

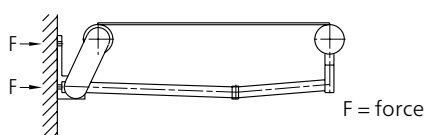
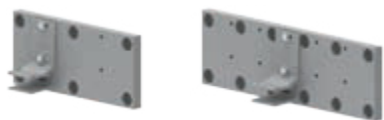
without centre bracket: 4 or 8

with centre bracket: 6 or 10

KUBATA INSTALLATION

EXTRACTION FORCES

-  1 85 mm wall bracket per arm or 2 85 mm wall bracket per arm; 1 85 mm wall bracket as centre bracket, from 451 cm wide
Number of fixings:
without centre bracket: 4 or 8
with centre bracket: 6 or 10
-  1 260 mm wall bracket per arm or 2 260 mm wall bracket per arm; 1 85 mm wall bracket as centre bracket, from 451 cm wide
Number of fixings:
without centre bracket: 8 or 16
with centre bracket: 10 or 18
-  1 240 x 280 x 15 mm mounting plate incl. 1 85 mm wall bracket per arm; 1 100 x 180 x 15 base plate for centre bracket including 1 85 mm wall bracket as centre bracket, from 451 cm wide
Number of fixings:
without centre bracket: 8
with centre bracket: 10
-  1 450 x 200 x 30 mm mounting plate including 2 85 mm wall brackets per arm; 2 100 x 180 x 15 base plates for centre bracket including 1 85 mm wall bracket as centre bracket, from 451 cm wide
Number of fixings:
without centre bracket: 12
with centre bracket: 14
-  1 640 x 280 x 15 mm mounting plate incl. 1 85 mm wall bracket per arm or 2 85 mm wall brackets per arm; 1 100 x 180 x 15 base plate for centre bracket including 1 85 mm wall bracket as centre bracket, from 451 cm wide
Number of fixings:
without centre bracket: 12
with centre bracket: 14
-  1 640 x 370 x 15 mm mounting plate incl. 1 85 mm wall bracket per arm or 2 85 mm wall brackets per arm; 1 100 x 180 x 15 base plate for centre bracket including 1 85 mm wall bracket as centre bracket, from 451 cm wide
Number of fixings:
without centre bracket: 12
with centre bracket: 14



WALL MOUNTING ON C20/25 CONCRETE

with up to 200 mm of facing extraction force in n per upper fixing for wall bracket extraction forces in N for ceiling


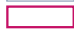
Width in cm	Projection in cm					
	150	200	250	300	350	400
200	921					
	461					
	283					
	305					
	136					
	100					
250	1,101	1,617				
	550	808				
	338	495				
	365	533				
	162	238				
	119	175				
300	1,280	1,879	2,626			
	640	939	1313			
	393	575	803			
	424	619	863			
	189	276	385			
	139	203	283			
350	1459	2141	2983	3992		
	730	1070	1492	1996		
	448	655	912	1219		
	483	706	981	1309		
	215	315	438	585		
	158	231	322	430		
400	1639	2403	3341	4459	5622	
	819	1201	1671	2229	2811	
	503	735	1021	1361	1715	
	543	792	1098	1462	1841	
	241	353	490	653	823	
	177	260	360	480	605	
450	1818	2665	3699	4926	3106	4347
	909	1332	1850	2463	1553	2174
	558	816	1131	1504		
	602	878	1216	1616	2034	2844
	268	391	543	722	910	1273
	197	288	399	531	669	936
500	1998	2927	4057	5393	3401	4763
	999	1463	2029	2696	1700	2381
	613	896	1240	1646		
	661	965	1333	1769	2227	3116
	294	430	595	790	996	1394
	216	316	438	581	732	1025
550	2177	3189	4415	2930	3695	5178
	1089	1594	2208	1465	1848	2589
	668	976	1349			
	721	1051	1451	1922	2420	3388
	321	468	648	859	1082	1516
	236	344	476	631	796	1115
600	2357	3451	4773	3163	3990	5594
	1178	1725	2386	1582	1995	2797
	723	1056	1459			
	780	1137	1569	2075	2613	3660
	347	507	700	927	1169	1637
	255	373	515	682	859	1204
650	2536	3713	5131	3397	4285	6009
	1268	1856	2565	1698	2142	3005
	778	1136	1568			
	839	1224	1686	2228	2806	3931
	373	545	753	996	1255	1759
	275	401	553	732	923	1293


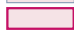
KUBATA INSTALLATION

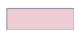

EXTRACTION FORCES



RAFTER MOUNTING

Shear forces in N for rafter mounting

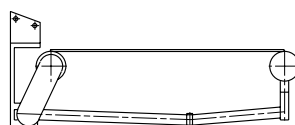
 1 rafter including
 1 85 mm wall bracket per arm or 2 rafter brackets including 2 85 mm wall brackets per arm, 1 rafter including 1 85 mm wall bracket as centre bracket, from 451 cm wide, one left and right version each
Applies with two brackets per arm on a rafter.

 1 rafter bracket including
 1 85 mm wall bracket per arm or 2 rafter brackets including 2 85 mm wall brackets per arm, 1 rafter including 1 85 mm wall bracket as centre bracket, from 451 cm wide one left and right version each
Applies with two brackets per arm each on a separate rafter.

 1 rafter bracket with
 Mounting plate including 1 85 mm wall bracket per arm or 2 rafter brackets with mounting plate including 2 85 mm wall brackets per arm
 1 rafter with mounting plate including 1 85 mm wall bracket as centre bracket, from 451 cm wide one left and right version each
Applies with two brackets per arm on a rafter.

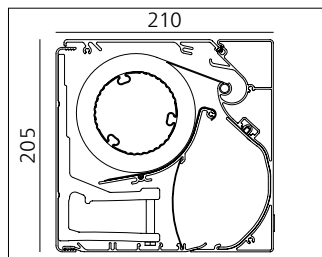
 1 rafter bracket with
 Mounting plate including 1 85 mm wall bracket per arm or 2 rafter brackets with mounting plate including 2 85 mm wall brackets per arm
 1 rafter with mounting plate including 1 85 mm wall bracket as centre bracket, from 451 cm wide one left and right version each
Applies with two brackets per arm each on a separate rafter.

Width in cm	Projection in cm					
	150	200	250	300	350	400
200	1523					
	1523					
	721					
	721					
250	1813	2598				
	1813	2598				
	853	1171				
	853	1171				
300	2102	3014	4153			
	2102	3014	4153			
	986	1355	1815			
	986	1355	1815			
350	2392	3430	4715	6257		
	2392	3430	4715	6257		
	1119	1539	2058	2682		
	1119	1539	2058	2682		
400	2682	3845	5278	6987	8776	
	2682	3845	5278	6987	8776	
	1252	1722	2302	2993	3716	
	1252	1722	2302	2993	3716	
450	2982	4271	5850	7727	9704	13495
	2982	4271	5850	7727	4862	6758
	1395	1916	2555	3314	4113	5646
	1395	1916	2555	3314	2067	2833
500	3271	4687	6413	8457	10622	14782
	3271	4687	6413	8457	5321	7401
	1527	2100	2798	3624	4500	6182
	1527	2100	2798	3624	2260	3101
550	3561	5102	6975	9187	11540	16068
	3561	5102	6975	4604	5781	8044
	1660	2283	3041	3935	4887	6717
	1660	2283	3041	1978	2454	3369
600	3851	5518	7537	9917	12459	17355
	3851	5518	7537	4969	6240	8688
	1793	2467	3284	4246	5274	7253
	1793	2467	3284	2133	2647	3637
650	4141	5933	8100	10647	13377	18641
	4141	5933	8100	5334	6699	9331
	1926	2651	3527	4556	5660	7789
	1926	2651	3527	2289	2841	3905

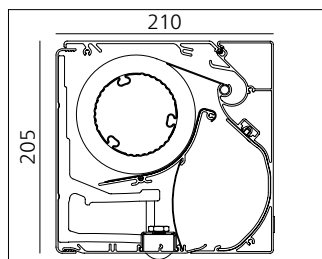


KUBATA PRICES

KUBATA



KUBATA LED



TECHNICAL FEATURES

Fabric:

Where very large widths and projections apply (400 cm), it is possible that the fabric will rest on the folding arms when the awning is half-open.
Winding creases may occur.

Pitch:

5° – 40°

The inclination is adjusted at the wall brackets.

Control:

If radio control is selected, the receiver is located behind a faceplate in front of the carrier bar.
LED option only possible for awnings with motor.

GENERAL INFORMATION

Prices incl. drive

Prices do not include brackets, mounting screws and dowels


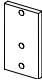


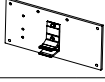
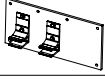
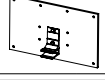
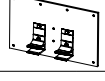
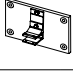
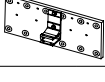
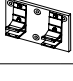
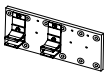



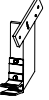
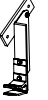
Included in basic price:

Connection	Kubata	with 3 m black lead and open ends
	Kubata LED	with hard wired: with two black 3 m leads and open ends with radio control option: with black 3 m lead and open ends
Frame colour		47 standard colours 9 trend colours
Fabric		from my collections, acrylic and polyester, sewn
Awning arm		LongLife arm with high-tech strip (10-year warranty)
Gear drive		reduced price does not apply to LED option (1-unit system, only up to max. 350 cm projection)

Surcharges for:

Hand-held radio transmitter
BiEasy 1M
BiEasy 5M
BiEasy 15M Go!
Radio receiver/sensors
BiRec MA-K
BiRec MLED (controls drive and dims LED lighting)
BiSens Agido-3V
Other BiConnect products/sensors
Other radio controls
Other colours
Other RAL colours - on top of basic price
Other structural colours - on top of basic price
Fabric
Non-weinor collection (acrylic and polyester) available with extended lead times
Accessories
Brackets

BRACKET OPTIONS

DRAWING		wDESCRIPTION OF BRACKETS	ITEM NO.	RECOMMENDED FIXINGS PER BRACKET
Front-mounted on wall (C20/25)				
		standard wall bracket (85 mm) complete	106810	2
		shim plate (100 x 180 x 15 mm) For use in combination with mounting plates (with 15 mm thick mounting plates one is required and with 30 mm thick mounting plates 2 shims are required)	108667	2
		wall bracket (260 mm) complete	108752	4
		mounting plate (240 x 280 x 15 mm) incl. 1 standard wall bracket (85 mm) complete 1 mounting plate per awning arm	108753	4
		mounting plate (640 x 280 x 15 mm) incl. 1 standard wall bracket (85 mm) complete 1 mounting plate per awning arm	108754	6
		mounting plate (640 x 280 x 15 mm) incl. 2 standard wall brackets (85 mm) complete 1 mounting plate per awning arm	108755	6
		mounting plate (640 x 370 x 15 mm) incl. 1 standard wall bracket (85 mm) complete 1 mounting plate per awning arm	108756	6
		mounting plate (640 x 370 x 15 mm) incl. 2 standard wall brackets (85 mm) complete 1 mounting plate per awning arm	108745	6
		mounting plate (450 x 200 x 30 mm) incl. 1 standard wall bracket (85 mm) complete 1 mounting plate per awning arm	124500	6
		mounting plate (640 x 200 x 30 mm) incl. 1 standard wall bracket (85 mm) complete 1 mounting plate per awning arm	124501	12
		mounting plate (450 x 200 x 30 mm) incl. 2 standard wall brackets (85 mm) complete 1 mounting plate per awning arm	124152	6
		mounting plate (640 x 200 x 30 mm) incl. 2 standard wall brackets (85 mm) complete 1 mounting plate per awning arm	124411	12
Roof mounting (on C20/25 concrete)				
		wall bracket (85 mm), complete with ceiling bracket 1 ceiling bracket per awning arm	101428	2
Rafter Mount				
left	right			
		1 rafter bracket + 1 standard wall bracket (85 mm) complete + screw set for rafters one left or right version each	111545	2
		1 rafter bracket + 1 mounting plate for rafter brackets + 1 standard wall bracket (85 mm) complete + screw set for rafters + screw set mounting plate for rafters one left or right version each	111546	2

OVER 200 MODERN FRAME COLOURS

MAXIMUM COLOUR SAFETY: WEINOR HAS OVER 200 DIFFERENT FRAME COLOURS FOR YOU TO CHOOSE FROM. YOU CAN CHOOSE FROM DIVERSE COLOURS WHICH HARMONISE WITH THE ARCHITECTURE.

IDENTICAL COLOURS FOR A PERFECT MATCH

As weinor does all the powder coating in its own workshop, you can also rest assured that different weinor products come with the same top-class colour tonality and identical gloss level.

CHOOSE FROM AN ABUNDANCE OF HIGH-QUALITY COLOURS:

- 47 standard RAL rack colours, silk gloss
- 9 scratchproof, resistant trend colours with an elegant textured look (standard)
- over 150 special RAL colours

Colour manufacturers make every effort to guarantee colour stability. Despite this, as a result of the ban on the use of heavy metals in powder coatings, it therefore cannot be excluded that colours in general, and Fire Red (RAL 3000) in particular, may fade with time. Colours may differ significantly due to the printing process.

9 trend colours

RAL 8003
Clay brown

RAL 6012
Black green

RAL 1002
Sandy yellow

RAL 1015
Light ivory

RAL 1003
Signal yellow

WT 029/50704
Approx.
RAL 6009 metallic

WT 029/90147
Approx.
RAL 9007 metallic

WT 029/80081
Iron glimmer
effect P7

WT 029/71289
Approx.
RAL 7016

WT 029/80077
Approx.
DB 703 metallic

WT 029/10797
Approx.
RAL 9010

WT 029/90146
Approx.
RAL 9006 metallic

WT 029/70786
Sparkling iron
effect

WT 029/60740
Chestnut 04
metallic

47 standard RAL colours



THE FABRIC MAKES THE AWNING

BREATHTAKINGLY BEAUTIFUL AND LONG-LASTING: OUR WIDE RANGE OF FABRIC PATTERNS BRINGS A COSY ATMOSPHERE OUTDOORS – STRICTLY ACCORDING TO YOUR INDIVIDUAL TASTE.

ATTRACTIVE AWNING FABRICS TO SUIT EVERY TASTE



my collections, weinor's new fabric range consists of 3 different colour ways with a total of 143 patterns in total.

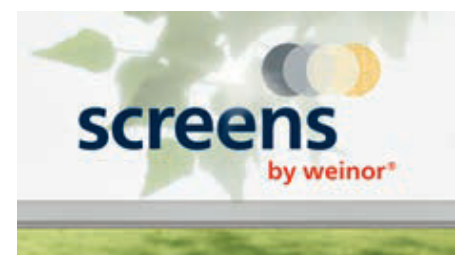
weinor fabrics are made from polyester or acrylic and are spinneret dyed. This guarantees outstanding durability, consistently radiant colours and great UV resistance.

Thanks to the Teflon fabric coating and state-of-the-art nanotechnology, the surface is resistant to oil, water, dirt and prevents rot.

my collections is also impressive in terms of environmental compatibility. The fabrics do not contain any substances harmful to health and they meet all the required environmental standards.

More information at:
www.weinor.com/fabric_qualities

VERTICAL SUN PROTECTION WITH A CRYSTAL-CLEAR VIEW



weinor external screens effectively protect both the indoors and outdoor spaces from overheating, whilst giving superb sun protection. They can also offer privacy from prying eyes. We recommend the screens by weinor® collection for this application.

It includes four different, high-quality fabrics, StarScreen, Perluca, Soltis® and fibreglass screen. They all offer perfect sun protection and privacy for windows, the patio and balconies. Different degrees of transparency and how much air is let through are possible, depending on requirements.



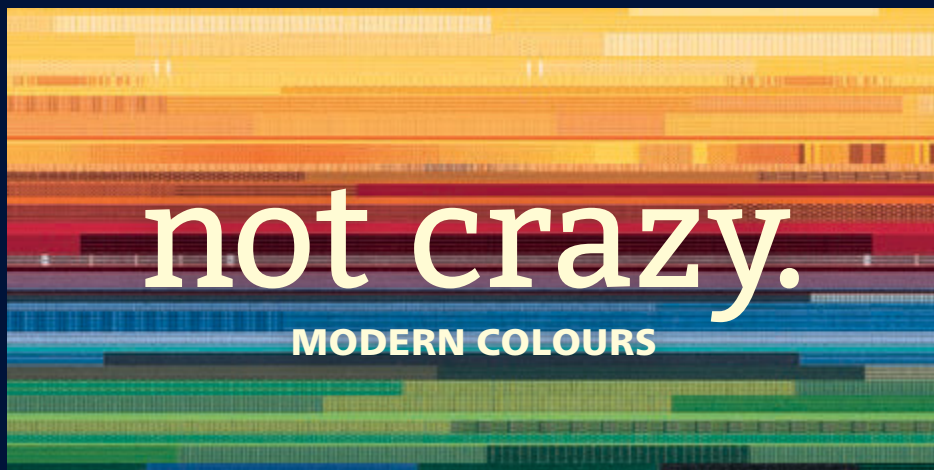
momentum

MODERN GREYS



mélange

MODERN BEIGES



not crazy.

MODERN COLOURS

momentum, mélange and not crazy.
Choose your favourite pattern from the 3 well selected colour ways. Whether it's timeless neutral, harmonious or creative trends – we have the right material and matching colour for every taste.


my collections
High-quality awning fabrics



AWNING



AWNING
with Valance Plus
and Tempura



AWNING
with Valance Plus
and Paravento



PERGOLA AWNING
Plaza Viva and Paravento

AWNINGS

PERGOLA AWNINGS

CUSTOMISED,
SYSTEMISED SOLUTIONS



PERGOLA AWNING
weinor PergoTex II

PATIO ROOFS AND GLASOASE®



PERGOLA AWNING
weinor PergoTex II
with VertiTex II
and Tempura



TERRAZZA PATIO ROOF
with Sottezza II sun protection



GLASOASE®
with conservatory awning
WGM Top and full glass
sliding door w17 easy



**TERRAZZA PURE
PATIO ROOF**
with lateral SUPER LITE
fixed glazing

info@solisproducts.com
+61 2 9439 9020

www.solisproducts.com

